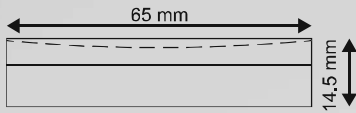


# LABWARE



**DESCRIPTION:**

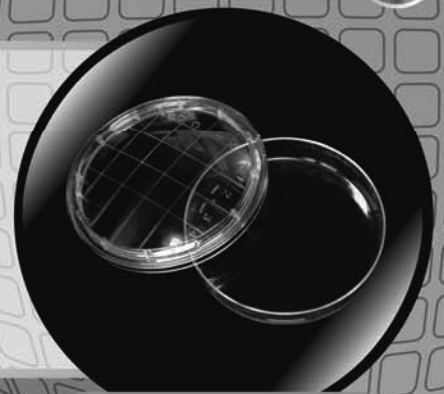
Round domed contact Petri dish Ø65 RODAC  
Material and color: Natural PS  
ASEPTIC: BP650S18SQ  
STERILE R.: BP650I18SQ

**CHARACTERISTICS:**

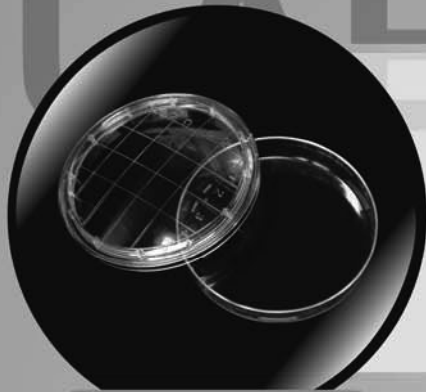
Compartment: 1  
Vents: No vents  
Diameter: Ø 65 mm  
Height: 14.5 mm  
Weight: 8.5 g.

**PACKAGING:**

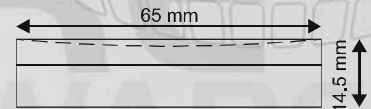
Quantity per PE bag: 18 pcs.  
Quantity per carton: 918 pcs.  
Weight of carton: 8.9 kg.



PETRI DISH Ø 65/0 RODAC



PETRI DISH Ø 65/4 RODAC



**DESCRIPTION:**

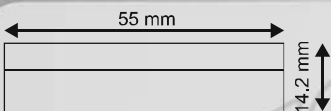
Round domed contact Petri dish Ø65 RODAC  
Material and color: Natural PS  
ASEPTIC: BP654S18SQ  
STERILE R.: BP654I18SQ

**CHARACTERISTICS:**

Compartment: 1  
Vents: 4 vents  
Diameter: Ø 65 mm  
Height: 14.5 mm  
Weight: 8.5 g.

**PACKAGING:**

Quantity per PE bag: 18 pcs.  
Quantity per carton: 918 pcs.  
Weight carton: 8.9 kg.



**DESCRIPTION:**

Round Petri dish Ø55  
Material and color: Natural PS  
ASEPTIC: BP550S15SQ  
STERILE R.: BP550I15SQ

**CHARACTERISTICS:**

Compartment: 1  
Vents: No vents  
Diameter: Ø 55 mm  
Height: 14.2 mm  
Weight: 6 g.

**PACKAGING:**

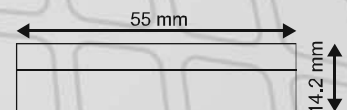
Quantity per PE bag: 15 pcs.  
Quantity per carton: 1005 pcs.  
Weight carton: 7 kg.



PETRI DISH Ø 55/0 H=14.2



PETRI DISH Ø 55/3 H=14.2



**DESCRIPTION:**

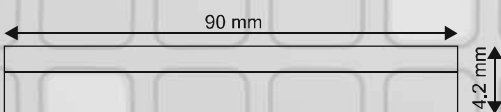
Round Petri dish Ø55  
Material and color: Natural PS  
ASEPTIC: BP553S15SQ  
STERILE R.: BP553I15SQ

**CHARACTERISTICS:**

Compartment: 1  
Vents: 3 vents  
Diameter: Ø 55 mm  
Height: 14.2 mm  
Weight: 6 g.

**PACKAGING:**

Quantity per PE bag: 15 pcs.  
Quantity per carton: 1005 pcs.  
Weight carton: 7 kg.



**DESCRIPTION:**

Round Petri dish Ø90  
Material and color: Natural PS  
ASEPTIC: BP900S25SQ  
STERILE R.: BP900I25SQ

**CHARACTERISTICS:**

Compartment: 1  
Vents: No vents  
Diameter: Ø 90 mm  
Height: 14.2 mm  
Weight: 15 g.

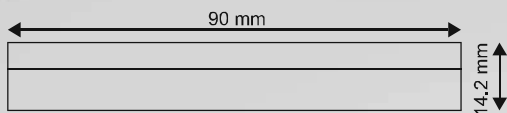
**PACKAGING:**

Quantity per PE bag: 25 pcs.  
Quantity per carton: 600 pcs.  
Weight carton: 10 kg.



PETRI DISH Ø 90/0 H=14.2

# LABWARE



**DESCRIPTION:**

Round Petri dish Ø90  
Material and color: Natural PS  
ASEPTIC: BP903S25SQ  
STERILE R.: BP903I25SQ

**CHARACTERISTICS:**

Compartment: 1  
Vents: 3 vents  
Diameter: Ø 90 mm  
Height: 14.2 mm  
Weight: 15 g.

**PACKAGING:**

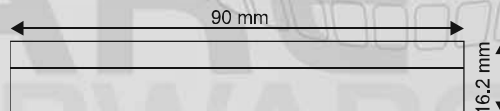
Quantity per PE bag: 25 pcs.  
Quantity per carton: 600 pcs.  
Weight carton: 10 kg.



**PETRI DISH Ø 90/3 H=14.2**



**PETRI DISH Ø 90/0 H=16.2**



**DESCRIPTION:**

Round Petri dish Ø90  
Material and color: Natural PS  
ASEPTIC: BH900S25SQ  
STERILE R.: BH900I25SQ

**CHARACTERISTICS:**

Compartment: 1  
Vents: No vents  
Diameter: Ø 90 mm  
Height: 16.2 mm  
Weight: 15 g.

**PACKAGING:**

Quantity per PE bag: 25 pcs.  
Quantity per carton: 600 pcs.  
Weight carton: 10.5 kg.



**DESCRIPTION:**

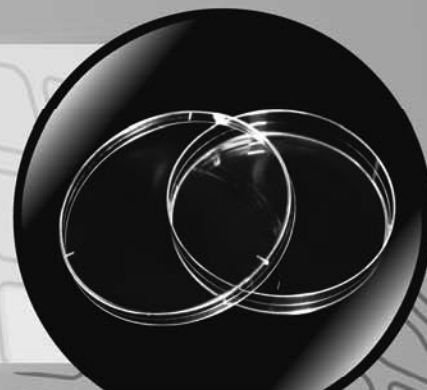
Round Petri dish Ø90  
Material and color: Natural PS  
ASEPTIC: BH903S25SQ  
STERILE R.: BH903I25SQ

**CHARACTERISTICS:**

Compartment: 1  
Vents: 3 vents  
Diameter: Ø 90 mm  
Height: 16.2 mm  
Weight: 15 g.

**PACKAGING:**

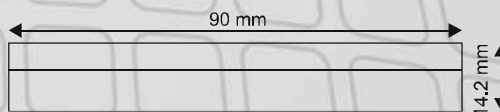
Quantity per PE bag: 25 pcs.  
Quantity per carton: 600 pcs.  
Weight carton: 10.5 kg.



**PETRI DISH Ø 90/3 H=16.2**



**PETRI DISH Ø 90/3 H=14.2 with laser mark**



**DESCRIPTION:**

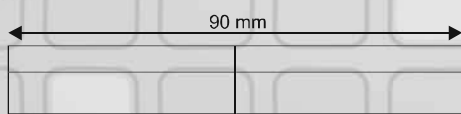
Round Petri dish Ø90 with laser mark  
Material and color: Natural PS  
ASEPTIC: BP913S25SQ  
STERILE R.: BP913I25SQ

**CHARACTERISTICS:**

Compartment: 1  
Vents: 3 vents  
Diameter: Ø 90 mm  
Height: 14.2 mm  
Weight: 15 g.

**PACKAGING:**

Quantity per PE bag: 25 pcs.  
Quantity per carton: 600 pcs.  
Weight carton: 10 kg.



**DESCRIPTION:**

Round Petri dish Ø90 with 2 sectors  
Material and color: Natural PS  
ASEPTIC: BP923S25SQ  
STERILE R.: BP923I25SQ

**CHARACTERISTICS:**

Compartment: 2  
Vents: 3 vents  
Diameter: Ø 90 mm  
Height: 14.2 mm  
Weight: 16 g.

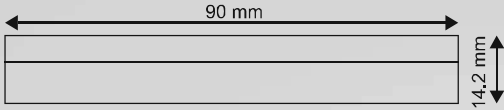
**PACKAGING:**

Quantity per PE bag: 25 pcs.  
Quantity per carton: 600 pcs.  
Weight carton: 11 kg.



**PETRI DISH Ø 90/3 H=14.2 with 2 sectors**

# LABWARE



**DESCRIPTION:**

Round Petri dish Ø90 stabile  
Material and color: Natural PS  
ASEPTIC: BP904S  
STERILE R.: BP904J

**CHARACTERISTICS:**

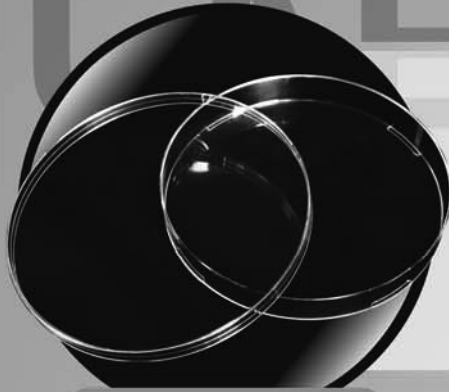
Compartment: 1  
Vents: 4 vents  
Diameter: Ø 90 mm  
Height: 14.2 mm  
Weight: 14,5 g.

**PACKAGING:**

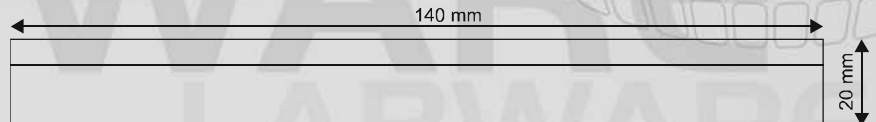
Quantity per PE bag: 25 pcs.  
Quantity per carton: 600 pcs.  
Weight carton: 10 kg.



**PETRI DISH Ø 90/4 H=14.2 STABLE**



**PETRI DISH Ø 140/0 H=20**



**DESCRIPTION:**

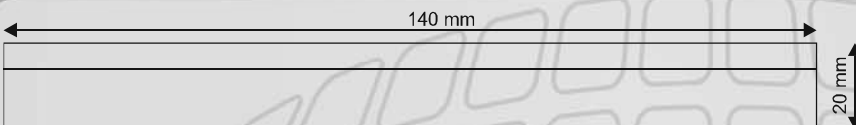
Round Petri dish Ø140  
Material and color: Natural PS  
ASEPTIC: BP1400S10SQ  
STERILE R.: BP1400I10SQ

**CHARACTERISTICS:**

Compartment: 1  
Vents: No vents  
Diameter: Ø 140 mm  
Height: 20 mm  
Weight: 43 g.

**PACKAGING:**

Quantity per PE bag: 10 pcs.  
Quantity per carton: 110 pcs.  
Weight carton: 5.8 kg.



**DESCRIPTION:**

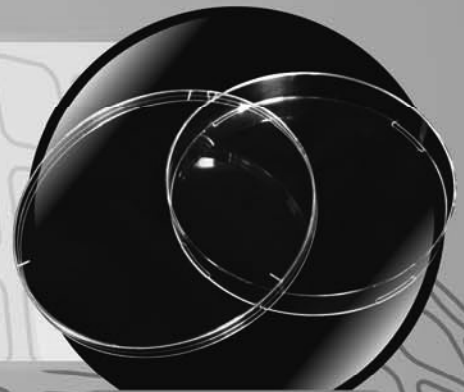
Round Petri dish Ø140  
Material and color: Natural PS  
ASEPTIC: BP1403S10SQ  
STERILE R.: BP1403I10SQ

**CHARACTERISTICS:**

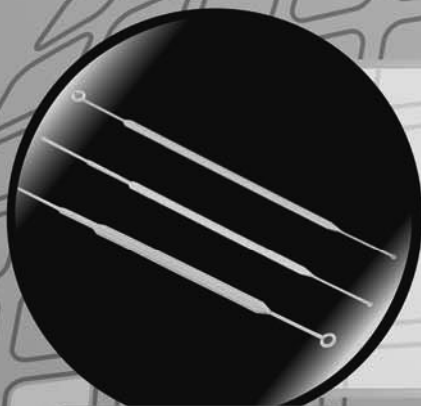
Compartment: 1  
Vents: 3 vents  
Diameter: Ø 140 mm  
Height: 20 mm  
Weight: 43 g.

**PACKAGING:**

Quantity per PE bag: 10 pcs.  
Quantity per carton: 110 pcs.  
Weight carton: 5.8 kg.



**PETRI DISH Ø 140/3 H=20**



**INOCULATING LOOPS**



**DESCRIPTION:**

Length: 194 mm  
Material and color of the lop: natural PS  
Nominal capacity: 10µ or 1µ  
Weight: 1 g.

**PACKAGING:**

Quantity per PE bag: 20 pcs.  
Quantity per carton: 9000 pcs.

**DESCRIPTION:**

Spreader, L form with curved end PS white  
Length: 148 mm  
Weight: 2,3 g.

**PACKAGING:**

Quantity per PE bag: 1, 5 or 25 pcs.  
Quantity per carton: 2000, 4000 or 5000 pcs.



**SPREADER**